

BaByliss[®] PRO
STYLIST TOOLS

TITANIUM EXPRESSION



25MM
CURLING TONG



BAB2874U

CONGRATULATIONS ON YOUR TITANIUM EXPRESSION PURCHASE

With over 50 year's heritage, BaByliss PRO remains the choice of the world's best professional stylists. When it comes to perfectly styled hair our mission is to create styling tools that delivery the very highest results.

We hope you enjoy using your new product from our Titanium Expression range; a luxurious collection of professional hair tools that combine high-fashion styling with innovative technology to help you achieve fast, long-lasting results with a flawless finish for salon performance every time.



TITANIUM
CERATHERM™
SYSTEM



Superior titanium-ceramic with ultra-advanced ceramic heaters delivering constant, regulated temperature control for fast, long-lasting results with a flawless finish.

IMPORTANT SAFETY CAUTIONS

- Please retain these instructions for future reference.
- This appliance should only be used as described within this instruction booklet.
- **WARNING!** Polythene bags over product or packaging may be dangerous. To avoid danger of suffocation, keep wrapper away from babies and children. These bags are not toys.
- **WARNING!** Do not use this appliance near water contained in basins, bathtubs or other vessels.
- Do not use the appliance in the bathroom.
- Do not immerse the appliance in water or other liquids.
- This appliance should only be used as described within this instruction booklet.
- Always inspect the appliance before use for noticeable signs of damage. Do not use if damaged, or if the appliance has been dropped. In the event of damage, contact the Conair Customer Care Line (refer to 'UK After Sales Service' section for further information).
- Do not use the appliance if the cord is damaged. In the event of damage, discontinue use immediately. If the cord is damaged it must be replaced by



the manufacturer. Return the appliance to the Conair Service Centre (refer to 'UK After Sales Service' section for further information).

- Do not leave the appliance unattended when switched on or plugged in.
- Do not place the appliance on any heat sensitive surface whilst in operation.
- Take care to avoid the hot surfaces of the appliance coming into direct contact with the skin, in particular the ears, eyes, face and neck.
- This appliance should not be used by adults or children whose lack of experience, product knowledge or disability might cause a hazard, unless they have been correctly instructed and are adequately supervised.
- Children should always be supervised to ensure that they do not play with this product.
- Allow appliance to cool before storing away.
- After use, do not coil the cord around the appliance as this may cause damage. Instead, coil loosely by the side of the appliance.
- This appliance complies with the requirements of Directives 04/108/EEC (Electromagnetic Compatibility) and 06/95/EEC (Electrical Safety of Domestic Appliances).

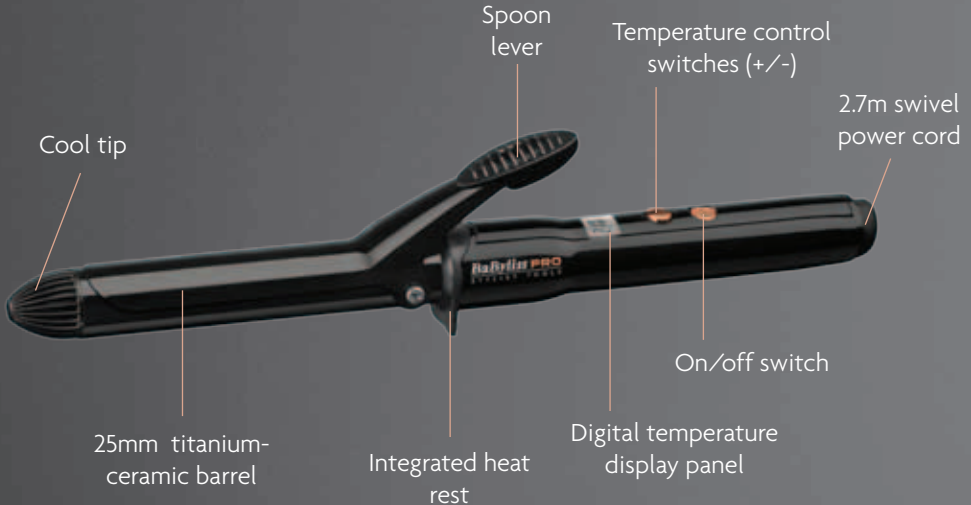
GETTING TO KNOW YOUR CURLING TONG

Create bouncy, classic curls with this 25mm Curling Tong featuring up to 210°C high heat and digital temperature control. Ultra-advanced ceramic heaters deliver constant, even heat distribution for fast, long-lasting results and the superior titanium-ceramic barrel with a super-smooth finish leaves hair frizz-free with added shine.

FEATURES

- 25mm barrel with superior titanium-ceramic for added shine
- Ultra-advanced ceramic heaters for constant, regulated temperature control
- 15 second heat up and instant heat recovery
- High heat performance up to 210°C for long-lasting results
- 11 digital temperature settings for enhanced hair protection on all hair types
- Stay cool safety tip
- Auto shut-off for added safety
- Salon length 2.7m swivel cord for ease of use
- Heat mat with storage compartment for convenience and safety

OPERATING FEATURES



FINDING THE CORRECT HEAT SETTING FOR YOUR HAIR TYPE

There are 11 temperature settings to select from (160°C-210°C) for enhanced hair protection on all hair types. Use the guide below to find the correct temperature for your hair category. We recommend you always start with a lower temperature and increase gradually if required.

Hair Type Description	Very Fine, Fragile Hair	Regularly Coloured or Highlighted Hair	Fine, Easy to Curl Hair	Normal Textured Hair	Naturally Curly or Wavy Hair	Thick or Coarse Hair
Recommended Temperature Setting	160°C	170°C	180°C	190°C	200°C	210°C

IMPORTANT! This appliance is designed to reach very high temperatures. If the maximum setting is too hot for the hair type then select a lower temperature setting.

HOW TO USE YOUR CURLING TONG

WARNING! This appliance reaches up to 210°C, please take care to avoid the hot barrel coming in to direct contact with the skin, in particular the ears, eyes, face and neck.

CAUTION! Do not place the appliance on any heat sensitive surface whilst in operation. Use the heat mat provided to protect the work surface whilst styling your hair.

- Ensure your hair is completely dry and combed through before use.
- Press the button marked 'I/O' to switch the styler on. The temperature display panel will begin to flash 160°C.
- The styler will automatically adjust to the 160°C temperature setting each time it is switched on and this will be displayed on the LCD screen.

IMPORTANT! Within 4 seconds of turning the styler on, the temperature setting will automatically lock. You are able to adjust the temperature setting immediately after switching on the styler, however if the temperature locks, hold down either the '+/-' buttons for 1-2 seconds to change the temperature.

- The temperature increases in 5°C increments for specific temperature control (160°C-210°C). **NOTE:** Always start with a lower temperature setting and increase gradually if required.
- The temperature on the display will flash while the styler is heating up to the selected temperature. You may still change the temperature setting at this time.
- When the selected temperature has been reached, the temperature display will stop flashing.

STYLING ADVICE

- Section dry hair evenly and comb through before styling.
- Press the lever and place the tong midway up the hair section and spread hair evenly between the lever and the barrel.
- Once hair is in place carefully let go of the lever so the hair is held securely between the lever and the barrel. Gently slide the tong down to the hair ends.
NOTE: If using this product on someone else, wrap all the hair section around the barrel **before** you let go of the lever.
- Wind the hair around the barrel at a slight angle, so the hair wraps around the barrel in a spiral motion. As you wind the hair around the barrel, ensure the hair is distributed evenly so the entire section is touching the barrel; try not to overlap the hair.
- Hold in place for 5-8 seconds depending on the texture and length of the hair.
- To remove the tong from the hair, press the lever and pull tong away.
- Allow the curl to cool before styling it further.
- Repeat as necessary through the remaining sections. Use the heat protection mat to place your styler on between each section to protect surfaces.
- After use, press and hold the 'I/O' button for 1-2 seconds to switch your styler off and unplug.
- Allow to cool completely before storing away. For extra protection, wrap the styler in the heat protection mat.

HELPFUL HINTS

- Use your curling tong to add volume to the roots.
- Section dry hair evenly and comb through before styling.
- Lift up a section of hair and place the tong underneath the hair close to the root being careful not to touch the scalp.
- Pull the hair down taught over the barrel for 5-8 seconds depending on hair type.
- Slide the tong out from under the section. Do not comb or brush hair until it cools.
- Repeat as necessary. Use the heat protection mat to place your styler on between each section to protect surfaces.
- After use, press and hold the 'I/O' button for 1-2 seconds to switch your styler off and unplug.
- Allow to cool completely before storing away. For extra protection, wrap the styler in the heat protection mat.

AUTO SHUT-OFF

This appliance has an automatic shut off feature for added safety. If the appliance is switched on for more than 60 minutes continuously, then it will automatically switch off. If you wish to continue using the appliance after this time, simply press the on/off button to turn the power on.

LOOKING AFTER YOUR CURLING TONG

- In order for your styler to retain its top performance it is important to make sure there is no product build up on the barrel. When the styler is completely cool and unplugged, use a damp cloth over the surface of the barrel to wipe away any styling product.
- Keep the power cord away from the hot barrel at all times.
- Before storing away, always allow the barrel to cool down and place in the heat mat provided for extra protection.
- To prevent cord damage, do not wrap the cord around the styler – always store the cord next to it.

UK GUARANTEE

This BaByliss PRO appliance is guaranteed for salon use for 6 months.

This guarantee covers defects under normal use from date of purchase and ceases to be valid in the event of alteration or repair by unauthorised persons. If the appliance does not perform satisfactorily due to defects in materials or manufacture, it will be repaired or replaced through Conair UK After Sales Service. The Conair Group Ltd reserves the right to amend terms and specifications without prior notice.

This guarantee in no way affects your statutory rights.

UK AFTER SALES SERVICE

For further advice on using the appliance, contact the Conair Customer Care Line on 0870 5 133191 (09:00 to 17:00 Monday to Friday) or email your enquiry to ukinfo@conair.com.

If you should need to return your appliance to us please send it to the following address:

Customer Care Centre,

Conair Logistics

Unit 4

Revolution Park

Buckshaw Avenue

Buckshaw Village


Chorley

PR7 7DW

Please enclose your name and address, together with a copy of proof of purchase and details of the fault.

SAFE DISPOSAL




The  symbol on the product or on its packaging indicates that this product may not be treated as household waste. Instead it should be handed to an appropriate collection point for the recycling of Electrical and Electronic equipment. By ensuring this product is disposed of correctly, you will help prevent potential negative consequences for the environment and human health, which could otherwise be caused by inappropriate waste handling of this product. For more detailed information about the recycling of this product, please contact your local council office or your household waste disposal service.

UK WIRING INSTRUCTIONS

The wires in the mains lead are coloured in accordance with the following code:

BLUE = NEUTRAL

BROWN = LIVE

- The wire which is coloured BLUE must be connected to the terminal which is marked with the letter N.
- The wire which is coloured BROWN must be connected to the terminal which is marked with the letter L.
- Neither core should be connected to the earth terminal of a three pin plug marked with the letter E or  .

This appliance comes fitted with a British Standard 13 amp type plug and a 3 amp fuse. It is important to always use a 3 amp fuse, should its replacement be required. If any other type of plug is used, a 5 amp fuse must be fitted at the distribution board.

BaByliss[®] **PRO**

STYLIST TOOLS