

BaByliss[®] PRO

S T Y L I S T T O O L S



CERAMIC DIAL-A-HEAT

BAB2243NBU (13mm Diameter)
BAB2244NBU (16mm Diameter)
BAB2245NBU (19mm Diameter)

BAB2264NBU (24mm Diameter)
BAB2265NBU (32mm Diameter)
BAB2266NBU (38mm Diameter)

CERAMIC DIAL-A-HEAT CURLING IRONS

These classic BaByliss PRO curling tongs are available in a complete professional range of 6 different sizes to create a variety of curl effects. Designed to deliver lasting results they feature a ceramic barrel for smoothness and shine, variable heat up to 210°C for different hair types and fast heat up and recovery for consistent styling.

Features:

- Ceramic barrel to create smooth, frizz-free curls
- Up to 210°C high heat for lasting results
- 25 heat settings 100°C - 210°C for different hair types
- Fast heat up and recovery
- Heat-ready indicator system
- On & off switches with indicator lights
- Stay cool safety tip
- Built in safety stand
- Salon length 2.7m swivel cord

SAFETY CAUTIONS

- This appliance should only be used as described within this instruction booklet. Please retain for reference.

IMPORTANT CHILD SAFETY

WARNING! Polythene bags over a product or package may be dangerous. To avoid danger of suffocation, keep this wrapper away from babies and children. This bag is not a toy.

WARNING! THIS APPLIANCE GETS HOT!

- **ALWAYS** keep out of reach of children (during and after use and whilst cooling).
- This appliance should not be used, cleaned or maintained by children.
- Always take extra care if used on children or near children.
- Do not use on very young children.
- Careful adult supervision is required when this appliance is used on or near children. Do not use on very young children.

IMPORTANT SAFETY

WARNING! Do not use this appliance near water contained in basins, bathtubs or other vessels.

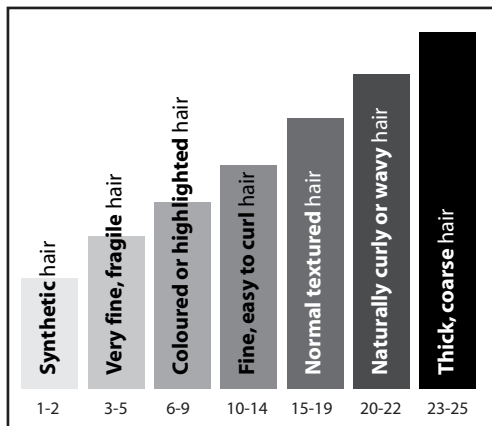
- Do not use this appliance in the bathroom.
- Do not immerse the appliance into water or other liquids.
- Always inspect the appliance before use for noticeable signs of damage. Do not use if damaged or if the appliance has been dropped. In the event of damage contact the Conair Customer Care Line (refer to 'UK After Sales Service' section for further information).
- Do not use the appliance if the lead is damaged. In the event of damage contact the Conair Customer Care Line (refer to 'UK After Sales Service' section for further information).
- Do not leave the appliance unattended when switched on or plugged in.
- Do not place the appliance on any heat sensitive surface whilst in operation.



- Take care to avoid the hot surface of the appliance coming into direct contact with the skin, in particular the eyes, ears, face and neck.
- This appliance should not be used by adults whose reduced physical, sensory or mental capabilities, or whose lack of experience and knowledge, might cause a hazard, unless they have been correctly instructed to understand the safe use and hazards involved and are adequately supervised.
- After use, switch off and unplug the appliance and continue to keep out of the reach of children as it will remain hot for several minutes. Allow the appliance to fully cool before storing away.
- After use, do not coil the lead around the appliance as this may cause damage to the lead. Instead, coil the lead loosely by the side of the appliance.
- This appliance complies with the requirements of Directives 2004/108/EC (Electromagnetic Compatibility) and 2006/95/EC (Electrical Safety of Domestic Appliances).

TEMPERATURE SETTING GUIDE

There are 25 heat settings to select from (100°C-210°C) for styling various hair types. Use the table below as a guide to find the correct temperature for your hair category. Always start with a lower temperature and increase gradually if required.



OPERATING INSTRUCTIONS

- Plug the appliance into a suitable mains socket.
- When the appliance is switched off the red off indicator light will be displayed.
- To switch the appliance on, press the 'I' key. The green and red indicator lights will flash intermittently while the styler heats up.
- There are 25 temperature settings to select from (refer to Temperature Setting Guide table above). For delicate, fine or coloured hair, use the lower heat settings. For thicker hair, use the higher heat settings. Always start with the lowest temperature setting and increase the level of heat as required.
- Use the dial selector to select the temperature required. The red and green indicator lights will flash until the required temperature is reached.
- The appliance is ready for use when the on indicator light remains green.

- Always place on a firm surface for safety, using the safety stand. Do not place the appliance on any heat sensitive surfaces. Allow the appliance to heat up before use.
- After use, switch off and unplug the appliance. Allow to cool fully before storing away.

STYLING ADVICE

- Section dry hair evenly and comb through before styling.
- Press the lever and place the tong midway up the hair section and spread hair evenly between the lever and the barrel.
- Once hair is in place carefully let go of the lever so the hair is held securely between the lever and the barrel. Gently slide the tong down to the hair ends.

NOTE: If using this product on someone else, wrap all the hair section around the barrel before you let go of the lever.

- Wind the hair around the barrel at a slight angle, so the hair wraps around the barrel in a spiral motion. As you wind the hair around the barrel, ensure the hair is distributed evenly so the entire section is touching the barrel; try not to overlap the hair.
- Hold in place for 5-8 seconds depending on the texture and length of the hair.
- To remove the tong from the hair, press the lever and pull tong away.
- Allow the curl to cool before styling it further.
- Repeat as necessary through the remaining sections.

CLEANING AND MAINTENANCE

- In order for your styler to retain it's top performance it is important to make sure there is no product build up on the barrel.
- When the styler is completely cool and unplugged, use a damp cloth to wipe the barrel clean.
- Keep the power cord away from the hot barrel at all times.
- Before storing away, always allow the barrel to cool down fully before storing away.
- To prevent cord damage, never wrap the cord around the styler.

UK GUARANTEE

This BaByliss PRO appliance is guaranteed for salon use for 6 months. This guarantee covers defects under normal use from date of purchase and ceases to be valid in the event of alteration or repair by unauthorised persons. If the appliance does not perform satisfactorily due to defects in materials or manufacture, it will be repaired or replaced through Conair UK After Sales Service. The Conair Group Ltd reserves the right to amend terms and specifications without prior notice.

This guarantee in no way affects your statutory rights.

UK AFTER SALES SERVICE

For further advice on using the appliance, contact the Conair Customer Care Line on 03705 133191 (09:00 to 17:00 Monday to Friday) or email your enquiry to ukinfo@conair.com.


If you should need to return your appliance to us please send it to the following address:

Customer Care Centre,
Conair Logistics
Unit 4
Revolution Park
Buckshaw Avenue
Buckshaw Village
Chorley
PR7 7DW

Please enclose your name and address, together with a copy of proof of purchase and details of the fault.

SAFE DISPOSAL



The  symbol on the product or on its packaging indicates that this product may not be treated as household waste. Instead it should be handed to an appropriate collection point for the recycling of Electrical and Electronic equipment. By ensuring this product is disposed of correctly, you will help prevent potential negative consequences for the environment and human health, which could otherwise be caused by inappropriate waste handling of this product. For more detailed information about the recycling of this product, please contact your local council office or your household waste disposal service.

UK WIRING INSTRUCTIONS

The wires in the mains lead are coloured in accordance with the following code:

- BLUE = NEUTRAL
- BROWN = LIVE

As the colours of the wire in the mains lead of this appliance may not correspond with the colour marking identifying the terminals on your plug, proceed as follows:

- The wire which is coloured BLUE must be connected to the terminal which is marked with the letter N.
- The wire which is coloured BROWN must be connected to the terminal which is marked with the letter L.
- Neither the BLUE nor BROWN wires should be connected to the terminal which is marked with the letter E or the \perp symbol.

This appliance is supplied fitted with a BS1363 mains plug and a BS1362 5A fuse. If this plug is removed from the appliance please ensure it is disposed of safely as a disconnected plug is dangerous if reconnected to the mains. If any other type of plug is used, a 5A fuse must be fitted.