

**BaByliss<sup>®</sup> PRO**  
STYLIST TOOLS

TITANIUM EXPRESSION



ULTIMATE  
STYLER

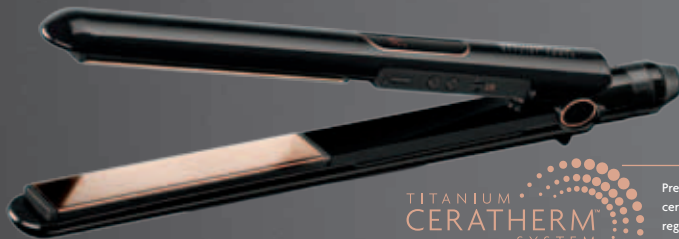


BAB2199U

## CONGRATULATIONS ON YOUR TITANIUM EXPRESSION PURCHASE

With over 50 year's heritage, BaByliss PRO remains the choice of the world's best professional stylists. When it comes to perfectly styled hair our mission is to create styling tools that delivery the very highest results.

We hope you enjoy using your new product from our Titanium Expression range; a luxurious collection of professional hair tools that combine high-fashion styling with innovative technology to help you achieve faster, longer-lasting results with a flawless finish for total salon performance every time.



TITANIUM  
CERATHERM™  
SYSTEM



Premium titanium with ultra-advanced ceramic heaters delivering constant, regulated temperature control. Heat is instantly transferred into the hair for faster, longer-lasting results with a flawless finish.

## IMPORTANT SAFETY CAUTIONS

- Please retain these instructions for future reference.
- This appliance should only be used as described within this instruction booklet.
- **WARNING!** Polythene bags over product or packaging may be dangerous. To avoid danger of suffocation, keep wrapper away from babies and children. These bags are not toys.
- **WARNING!** Do not use this appliance near water contained in basins, bathtubs or other vessels.
- Do not use the appliance in the bathroom.
- Do not immerse the appliance in water or other liquids.
- This appliance should only be used as described within this instruction booklet.
- Always inspect the appliance before use for noticeable signs of damage. Do not use if damaged, or if the appliance has been dropped. In the event of damage, contact the Conair Customer Care Line (refer to “UK After Sales Service” section for further information).
- Do not use the appliance if the cord is damaged. In the event of damage, discontinue use immediately. If the cord is damaged it must be replaced by



the manufacturer. Return the appliance to the Conair Service Centre (refer to “UK After Sales Service” section for further information).

- Do not leave the appliance unattended when switched on or plugged in.
- Do not place the appliance on any heat sensitive surface whilst in operation.
- Take care to avoid the hot surfaces of the appliance coming into direct contact with the skin, in particular the ears, eyes, face and neck.
- This appliance should not be used by adults or children whose lack of experience, product knowledge or disability might

cause a hazard, unless they have been correctly instructed and are adequately supervised.

- Children should always be supervised to ensure that they do not play with this product.
- Allow appliance to cool before storing away.
- After use, do not coil the cord around the appliance as this may cause damage. Instead, coil loosely by the side of the appliance.
- This appliance complies with the requirements of Directives 04/108/EEC (Electromagnetic Compatibility) and 06/95/EEC (Electrical Safety of Domestic Appliances).

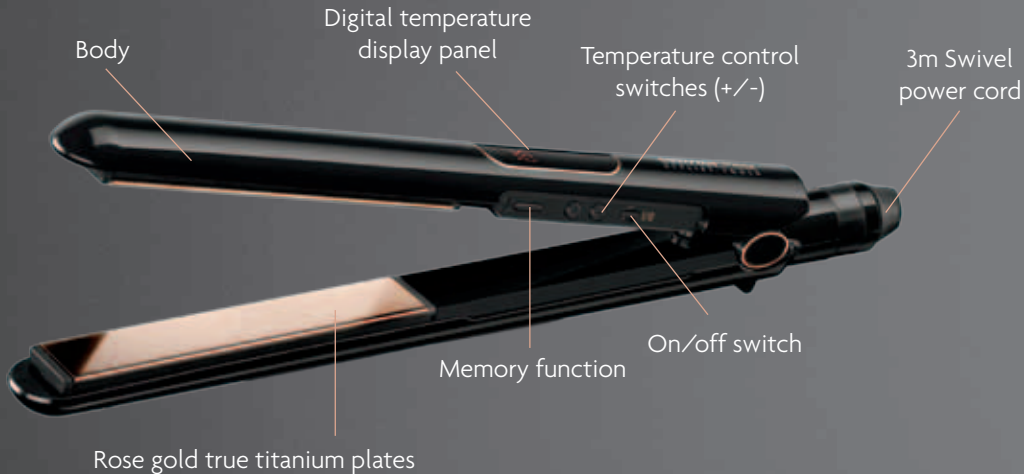
## GETTING TO KNOW YOUR ULTIMATE STYLER

The Ultimate Styler has true titanium rose gold plates to deliver ultra-fast styling with superior smoothness and shine. Heat is instantly transferred into the hair for super-straight styles and ultra-advanced ceramic heaters deliver constant, regulated temperature control for even faster and longer-lasting results with a brilliant high shine finish.

### FEATURES

- Premium rose gold titanium plates for superior smoothness and shine
- Ultra-advanced ceramic heaters give 15 second heat up with constant, regulated temperature control
- Curved housing design to create curls, flicks and waves
- 12 digital temperature settings 180°C-235°C with memory function for all hair types
- Instant heat recovery
- Heat mat with storage compartment for convenience and safety
- Salon length 3m swivel cord for ease of use
- Multi-voltage for worldwide use
- Auto shut-off after 72 mins

## OPERATING FEATURES



## FINDING THE CORRECT HEAT SETTING FOR YOUR HAIR TYPE

There are 12 temperature settings to select from (180°C-235°C) for enhanced hair protection on all hair types. Use the guide below to find the correct temperature for your hair category. We recommend you always start with a lower temperature and increase gradually if required.

Hair Type Description	Very Fine, Fragile Hair	Regularly Coloured or Highlighted Hair	Fine, Easy to Curl Hair	Normal Textured Hair	Naturally Curly or Wavy Hair	Thick or Coarse Hair
Recommended Temperature Setting	180°C	185°C	190°C	195°C	200°C	210-235°C

**IMPORTANT!** This appliance is designed to reach very high temperatures. If the maximum setting is too hot for the hair type then select a lower temperature setting.



## HOW TO USE YOUR ULTIMATE STYLER

**WARNING!** This appliance reaches up to 235°C, please take care to avoid the hot plates coming in to direct contact with the skin, in particular the ears, eyes, face and neck.

**CAUTION!** Do not place the appliance directly onto any heat sensitive surface whilst in operation. Use the heat mat provided to protect the work surface whilst styling your hair.

- Ensure hair is dry and combed through.
- Press the I/O button to switch the styler on.
- The styler will automatically heat up to 180°C. When it's reached this temperature the digital display will remain at 180°C.
- Use the temperature buttons (+/-) to select the preferred temperature.
- The temperature increases in 5°C increments for specific temperature control (180°C-235°C). **NOTE:** Always start with a lower temperature setting and increase gradually if required.
- The display will flash 3 times to confirm the temperature has been selected.
- After use, press the I/O button to switch off and unplug the styler.
- Allow the styler to cool down before storing away.

## TEMPERATURE MEMORY FUNCTION

The memory feature allows you to select your preferred temperature setting and store it for consistent results during each use.

- To programme your preferred temperature, ensure the styler is switched on. Select the temperature you require by using the temperature buttons (+/-) and by viewing the digital display.
- Hold down the memory button (M) for 3 seconds. The temperature on the digital display will flash 3 times to confirm the temperature has been stored.
- The memory function will store the selected temperature setting for all uses.
- When switching the styler back on for the next use, simply press the memory button (M) and your stored temperature will be automatically selected.

**NOTE:** To reset the stored temperature at any time, simply select a different temperature and hold down the memory button for 3 seconds, wait for it to flash 3 times and the new temperature will be stored.

## STRAIGHTENING

- Ensure hair is dry and combed through.
- Divide hair into sections and place the section between the plates, close to the roots.
- Gently slide the plates down the length of the hair. If you want to create some shape at the ends of the hair, slightly bend your wrist inwards or outwards as you reach the end of each section.
- Repeat as necessary through the remaining sections of your hair.
- Use the heat protection mat to place your styler on between each section to protect surfaces.
- Allow the hair to cool fully before combing through.

## CREATING CURLS

- Separate a section of hair. The smaller the section the more defined the curl. The larger the section the looser the curl or wave.
- Take the hair section and place between the plates, roughly 3 inches from the roots. (See Fig. 1).
- Turn the styler 180° back on itself so that the hair is wrapped once around the outside of the styler. (See Fig. 2).
- Slowly glide the styler along the length of hair from root to tip in a downward motion. (See Fig. 3).
- Release the styler from the hair.
- To ensure the curl sits neatly in place, hold the end of the section you have curled and twist it in the direction of the curl. (See Fig. 4).

Fig.1



Fig.2

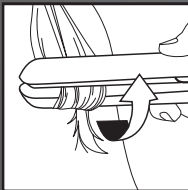


Fig.3

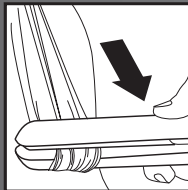


Fig.4



## HELPFUL TIPS

- Don't rub hair with a towel when drying – this makes the cuticle rough, which can give the appearance of frizz and therefore prevents shine.
- Try not to shampoo every day - washing too often can dehydrate your hair.
- Always use a heat protection product on your hair before styling.
- Adjust the temperature of your Ultimate Styler depending on your hair type to prevent drying your hair out. Use the guide on page 8 to help find the right temperature for your hair type.
- Experiment with your styler and unleash your creative side by using it for straight styles, waves, curls and flicks!

## AUTO SHUT-OFF

This appliance has an automatic shut off feature for added safety. If the appliance is switched on for more than 72 minutes continuously, then it will automatically switch off. If you wish to continue using the appliance after this time, simply press the on/off button to turn the power on.

## LOOKING AFTER YOUR ULTIMATE STYLER

- In order for your styler to retain its top performance it is important to make sure there is no product build up on the plates. This will ensure the plates always glide smoothly through the hair. When the styler is completely cool and unplugged, use a damp cloth over the surface of the plates to wipe away any styling product.
- Keep the power cord away from the hot plates at all times.
- Before storing away, always allow the plates to cool down and place in the heat mat provided for extra protection.
- To prevent cord damage, do not wrap the cord around the styler – always store the cord next to it.

## UK GUARANTEE

This BaByliss PRO appliance is guaranteed for salon use for 6 months.

This guarantee covers defects under normal use from date of purchase and ceases to be valid in the event of alteration or repair by unauthorised persons. If the appliance does not perform satisfactorily due to defects in materials or manufacture, it will be repaired or replaced through Conair UK After Sales Service. The Conair Group Ltd reserves the right to amend terms and specifications without prior notice.

This guarantee in no way affects your statutory rights.



## UK AFTER SALES SERVICE

For further advice on using the appliance, contact the Conair Customer Care Line on 0870 5 133191 (09:00 to 17:00 Monday to Friday) or email your enquiry to [ukinfo@conair.com](mailto:ukinfo@conair.com).

If you should need to return your appliance to us please send it to the following address:

Customer Care Centre,

Conair Logistics

Unit 4

Revolution Park

Buckshaw Avenue

Buckshaw Village


Chorley

PR7 7DW

Please enclose your name and address, together with a copy of proof of purchase and details of the fault.

## SAFE DISPOSAL




The  symbol on the product or on its packaging indicates that this product may not be treated as household waste. Instead it should be handed to an appropriate collection point for the recycling of Electrical and Electronic equipment. By ensuring this product is disposed of correctly, you will help prevent potential negative consequences for the environment and human health, which could otherwise be caused by inappropriate waste handling of this product. For more detailed information about the recycling of this product, please contact your local council office or your household waste disposal service.

## UK WIRING INSTRUCTIONS

The wires in the mains lead are coloured in accordance with the following code:

BLUE = NEUTRAL

BROWN = LIVE

- The wire which is coloured BLUE must be connected to the terminal which is marked with the letter N.
- The wire which is coloured BROWN must be connected to the terminal which is marked with the letter L.
- Neither core should be connected to the earth terminal of a three pin plug marked with the letter E or  .

This appliance comes fitted with a British Standard 13 amp type plug and a 5 amp fuse. It is important to always use a 5 amp fuse, should its replacement be required. If any other type of plug is used, a 5 amp fuse must be fitted at the distribution board.

*BaByliss*<sup>®</sup> **PRO**

---

STYLIST TOOLS