

fabric ice cream cone

free

skill level 2



more projects, tips & techniques at Joann.com[®]

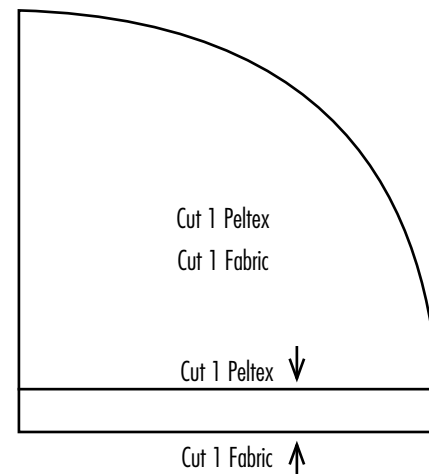
Sew with Jo-Ann

SUPPLIES & TOOLS:

- 1/4 yd fabric for "ice cream" ball & trim
- 6" square contrast for "cone"
- 6" square of fusible Peltex
- Fiber fill
- Fabric glue
- 1 yd ribbon for hanging
- Thread
- Sewing machine
- Basic sewing supplies

DIRECTIONS:

1. Enlarge pattern for cone.
2. Cut cone from Peltex.
3. Fuse Peltex to wrong side of fabric for cone.
4. Cut fabric to shape leaving 1/4" on one side for gluing
5. Roll into cone shape and glue fabric edge to cone.
6. Cut a 9" circle from ice cream fabric and a strip 1-1/2"x20".
7. Gather around outside edge of circle.
8. Pull ends to gather.
9. Firmly stuff into a ball shape, tightening gathering.
10. Secure gathering.
11. Glue ball to cone.
12. Run a gathering stitch along center of strip.
13. Pull gathers to create an 8" strip.
14. Glue around cone as shown.
15. Fold ribbon in half and glue to top of ice cream cone.



Courtesy of Jo-Ann Fabric and Craft Stores[®]

Skill Level 2: Some experience necessary

Approx. Crafting Time: 1-2 hrs

Please read and follow all manufacturers' instructions for all tools and materials used.
Provide adult supervision if children participate in this project.
©2013 Jo-Ann Stores, Inc.

JO-ANN
fabric and craft stores[®]