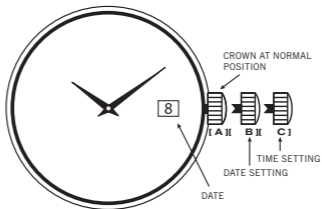


S W I S S T I M E P I E C E S

ANNE KLEIN  
NEW YORK

LIFETIME LIMITED WARRANTY





## SETTING THE TIME

Pull out Crown all the way until it stops (position 'C'). The second hand will stop. Rotate the Crown in either direction until desired time is obtained. Push Crown back in all the way (position 'A') to re-engage time keeping. Second hand will begin to move.

**NOTE:** Never pull the Crown when the watch is wet.

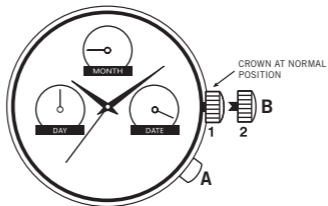
## **SETTING THE TIME, DAY AND DATE**

If your watch has a Date or a Day and Date Window, pull the Crown out to position **'B'** and turn the Crown in both directions until the Date showing is the day before the desired Date. Pull out the Crown all the way (position **'C'**) and turn the Crown to advance time. When midnight is reached, the Date will advance to the desired Date. Continue to turn the Crown until the desired time is obtained. Push the Crown back in all the way until it stops (position **'A'**) to re-engage time keeping.

## **WATER RESISTANCE**

If your watch is water resistant, the watch is tested to be water resistant to 3-5 atmospheres (100-165 feet).

**NOTE:** Over time, the gaskets of the case may become worn and reduce the water resistance of the watch. A trained specialist should change the gaskets and the O-ring each time the battery is changed. To avoid any unwanted condensation, watches of all specifications (water resistant or not) should not be exposed to extreme temperatures such as cold or heat.



## FEATURES

- Hours, Minutes, Seconds, Month, Date and Day of the Week are displayed
- Month/Date/Day Sub Dials
- Water Resistant to 165 ft.

## SETTING FEATURES

### To advance the Day:

- A) Pull the Crown ('B') out to Position 2 and rotate the Crown counter clockwise. The Day will advance one Day at 12:30AM.
- B) To advance additional days: after Step A, turn the Crown clockwise and counter clockwise between 12:30AM and 3:30AM. The Day will change at the end of this sequence.
- C) Push the Crown in to Position 1 when desired Day is obtained.

### To advance the Month:

Do not set the Month between 8:00PM and 3:00AM.

- A) Press 'A' once to advance the Date.
- B) Continue to press 'A' until the Date passes 31. This will advance the Month.
- C) Repeat Step B until the desired Month is obtained.

## SETTING FEATURES

### **To advance the Date:**

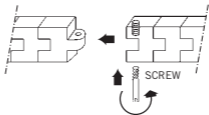
- A) Press **'A'** once to advance the Date. Continue to press **'A'** until the desired Date is obtained.

### **To advance the Time:**

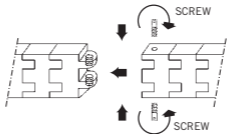
- A) Pull the Crown (**'B'**) out to Position 2 and rotate the Crown clockwise or counter clockwise until the desired Time is obtained.
- B) Push the Crown in to Position 1 when desired Time is obtained.

## DIAGRAMS FOR ADJUSTABLE BRACELET WATCHES

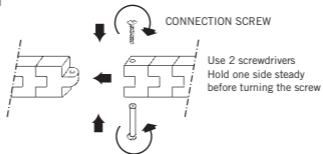
### ONE SCREW SYSTEM



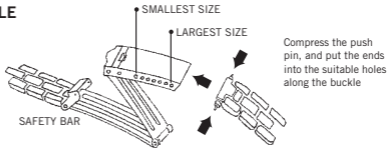
### TWO SCREW SYSTEM Screw in one at a time



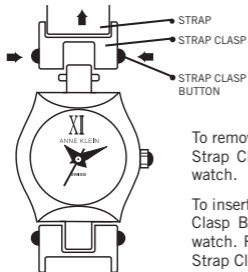
## CONNECTION SYSTEM



## FOLD-OVER BUCKLE



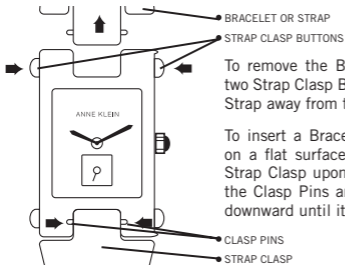
## CHANGING THE BRACELET OR STRAPS



To remove the Bracelet or Strap, press in the two Strap Clasp Buttons and lift the Strap from the watch.

To insert an alternate Strap, press in the two Strap Clasp Buttons and set the Strap Clasp onto the watch. Release the Strap Clasp Buttons when the Strap Clasp 'clicks' into position.

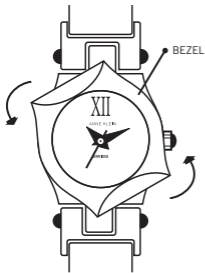
## CHANGING THE BRACELET OR STRAPS



To remove the Bracelet or Strap, press in the two Strap Clasp Buttons and pull the Bracelet or Strap away from the watch.

To insert a Bracelet or Strap, place the watch on a flat surface and position the Bracelet or Strap Clasp upon the watch as shown. Push in the Clasp Pins and slide the Bracelet or Strap downward until it 'clicks' into position.

## CHANGING THE BEZEL

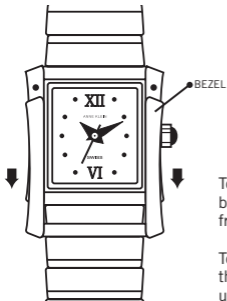


To remove the Bezel, turn the Bezel counterclockwise until you can lift the Bezel from the watch.

Note: It is easier to unscrew the Bezel when neither the Straps nor the Bracelet are attached to the watch.

To install a different Bezel, turn the Bezel clockwise until the Bezel is tight and aligns properly with the watch.

## CHANGING THE BEZEL



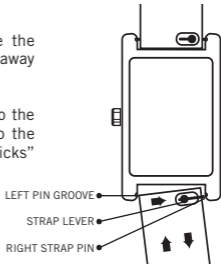
To remove the Bezel, slide the Bezel toward the bottom of the Watch until you can lift the Bezel from the watch.

To install a different Bezel, align the grooves of the Bezel with the Watch and slide the Bezel upward until the Bezel 'clicks' into place.

## CHANGING THE STRAPS

To remove the Strap, place the watch face down on a soft, flat surface. Slide the Strap Lever to the left and pull the Strap away from the watch.

To insert the new strap, set Strap Pin into the Left Pin Groove. Slide the Strap Lever to the left. Align the Strap so the Right Pin “clicks” into the Right Pin Groove when the Lever is released.



Dear Customer:

Help your watch/jewelry retailer protect our environment by properly recycling the button cell battery in your watch. Professional jewelers and watch retailers are best equipped to replace the battery in your watch without damage to the watch case and movement inside. They have the specialized tools and experience to do the job right. Inexperienced people can scar the case and damage the water resistant seal – voiding your warranty. It is important to recycle your watch battery in an environmentally safe way. Watch batteries contain very small amounts of mercury, which is required to prevent corrosion of the battery and damage to your watch. There is no danger to you or your watch from the mercury because it is in the sealed battery. But you need to recycle your watch battery properly. Your professional watch/jewelry retailer is the best person to do this for you. These professionals collect used batteries and recycle them through licensed waste management companies.

Do our environment and your watch a favor. Ask your watch/jewelry professional to replace your battery when it expires.

## **CHANGING THE BATTERY**

Replace batteries when the watch becomes slow or does not operate, the readout darkens or does not appear or the backlight fails. Replace with same or equivalent.

**NOTE:** Battery change should be performed by a qualified technician who should also check the condition of the gaskets at the same time.

**BATTERIES ARE NOT COVERED UNDER WARRANTY.**

**USE OUR NATIONWIDE SERVICE CENTERS.  
YOU CANNOT RETURN WATCH FOR SERVICE  
WHERE IT WAS PURCHASED.**

If your watch requires cleaning, lubrication, battery changing, or needs a crystal replaced, ANNE KLEIN NEW YORK WATCH approved Service Centers are available in your area. These repair facilities use ANNE KLEIN NEW YORK WATCH parts and components to assure quality and future performance. Free estimates are available in advance, should you need servicing or repairs not

covered under the warranty. Repairs covered under the warranty may require proof of purchase, so retain the purchase receipt.

**TO RETURN YOUR WATCH FOR SERVICING:**

Carefully pack your watch in a sturdy box (do not send in a gift box for same will not be returned) and mail to the nearest approved authorized service station:

ANNE KLEIN NEW YORK WATCHES  
c/o Louis-Neil Watchmakers  
9831 Bustleton Ave  
Philadelphia, PA 19115  
tel: (215) 676-3729

ANNE KLEIN NEW YORK WATCHES  
c/o Time Machine  
2335 Honolulu Ave  
Montrose, California, 91020  
tel: (818) 249-6007

Because of possible loss, we recommend that you insure your watch, return receipt requested, when using the mail. If you do not receive a receipt within a reasonable time, start a tracer through the originating post office. Never include a special watch band or any other article of personal value in your shipment.

## LIMITED WARRANTY

This ANNE KLEIN NEW YORK WATCH is warranted to you, the owner, for your lifetime against all defects in material or workmanship. This warranty does not apply to normal wear and tear or abuse and excludes batteries, case, strap, crystal, or bracelet. In the event of a defect or malfunction of the movement within this period it will be repaired or replaced, at our option, provided that it is returned prepaid with a check or money order for \$9.95 to cover the cost of handling and return postage. This charge does not apply to California residents. (This is not a repair charge.) DO NOT SEND CASH. No additional charge will be made unless additional servicing is necessary for reasons beyond our control such as accident, misuse, neglect or replacement of parts not warranted is required such as case, crystal, strap, bracelet or batteries in which event a moderate charge will be made. The movement of any timepiece requires periodic cleaning/timing which is not a defect and, as such not warranted. After one year from the date of purchase each cleaning/timing will be performed as required without charging a fee in excess of the specified \$9.95 handling charge.

The above remedy is exclusive. ANNE KLEIN NEW YORK WATCH shall not be liable for any incidental or consequential damages. Should any other part of your watch require repair, please use our Service Center for quick and inexpensive repairs on your watch. This warranty gives you specific legal rights and you may also have other rights which may vary from state to state. Some states do not allow limitations on how long an implied warranty lasts, or the exclusion or limitation of incidental or consequential damages, so the above limitations and exclusions may not apply to you. In the event of a problem with warranty service or performance, you may be able to go to Small Claims Court, a State Court or a Federal District Court.

### CALIFORNIA RESIDENTS ONLY!!!

NOTE: There is no handling charge for in warranty service. Charges apply only for NON-WARRANTY ITEMS such as cleaning after one year and other routine maintenance.

*\* SPECIFICATIONS SUBJECT TO CHANGE WITHOUT PRIOR NOTICE FOR  
PRODUCT IMPROVEMENT, DESIGN MAY VARY DEPENDING ON THE MODEL.*

revised 07/30/2009\_MB09-155\_LP



